



RF/MICROWAVE

Coaxial Connectors

TAIWANGAST INC.

2F, No.27, Jhong-Rong St., Sin-Jhuang City, Taipei County 242, Taiwan

TEL. 886 2 8994 1601, FAX. 886 2 8994 1602

sales@rfconnector.com.tw, www.rfconnector.com.tw

General Information

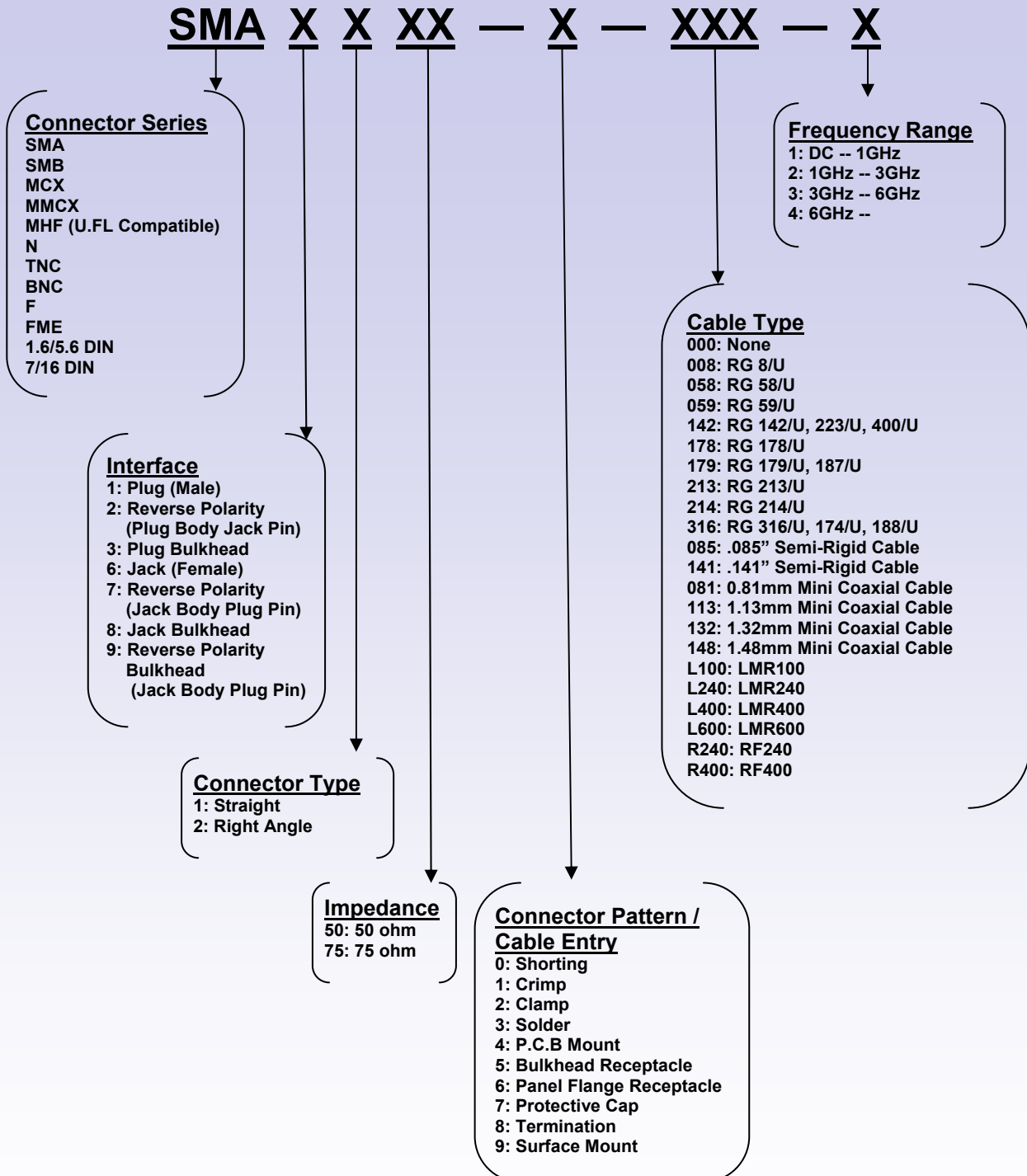
SMA	Subminiature Connectors Screw Lock	50 Ω	18 GHz
SMB	Subminiature Connectors Snap Lock	50 Ω 75 Ω	4 GHz 3 GHz
MCX	Microax Connectors Snap Lock	50 Ω 75 Ω	6 GHz 3 GHz
MMCX	Miniature Microax Connectors Snap Lock	50 Ω	6 GHz
N	Coaxial Connectors Screw Lock	50 Ω 75 Ω	11 GHz 1.5 GHz
TNC	Coaxial Miniature Connectors Screw Lock	50 Ω 75 Ω	11 GHz 1 GHz
BNC	Coaxial Miniature Connectors Bayonet Lock	50 Ω 75 Ω	4 GHz 1 GHz
FME	Coaxial Miniature Connectors Screw Lock	50 Ω	3 GHz
F	Coaxial Connectors Screw Lock	75 Ω	1 GHz
1.6/5.6	Coaxial Connectors Screw Lock	75 Ω	1 GHz
7/16	Coaxial Connectors Screw Lock	50 Ω	7.5 GHz
Adaptors	Between Series		

TAIWANCAST INC.

2F, No.27, Jhong-Rong St., Sin-Jhuang City, Taipei County 242, Taiwan

TEL. 886 2 8994 1601, FAX. 886 2 8994 1602, sales@rfconnector.com.tw, www.rfconnector.com.tw

RF Connector Number Legend

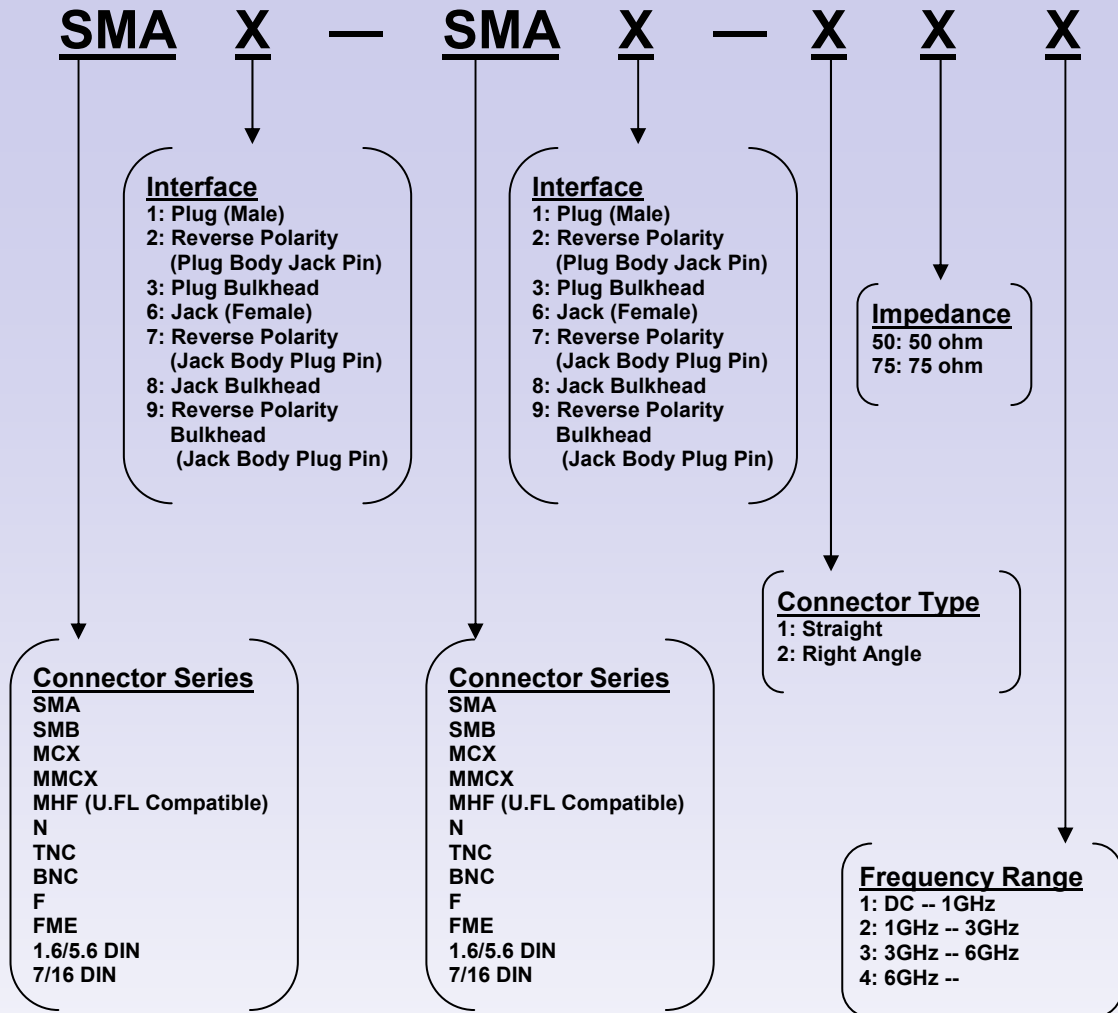


TAIWANCAST INC.

2F, No.27, Jhong-Rong St., Sin-Jhuang City, Taipei County 242, Taiwan

TEL. 886 2 8994 1601, FAX. 886 2 8994 1602, sales@rfconnector.com.tw, www.rfconnector.com.tw

RF Adapter Number Legend

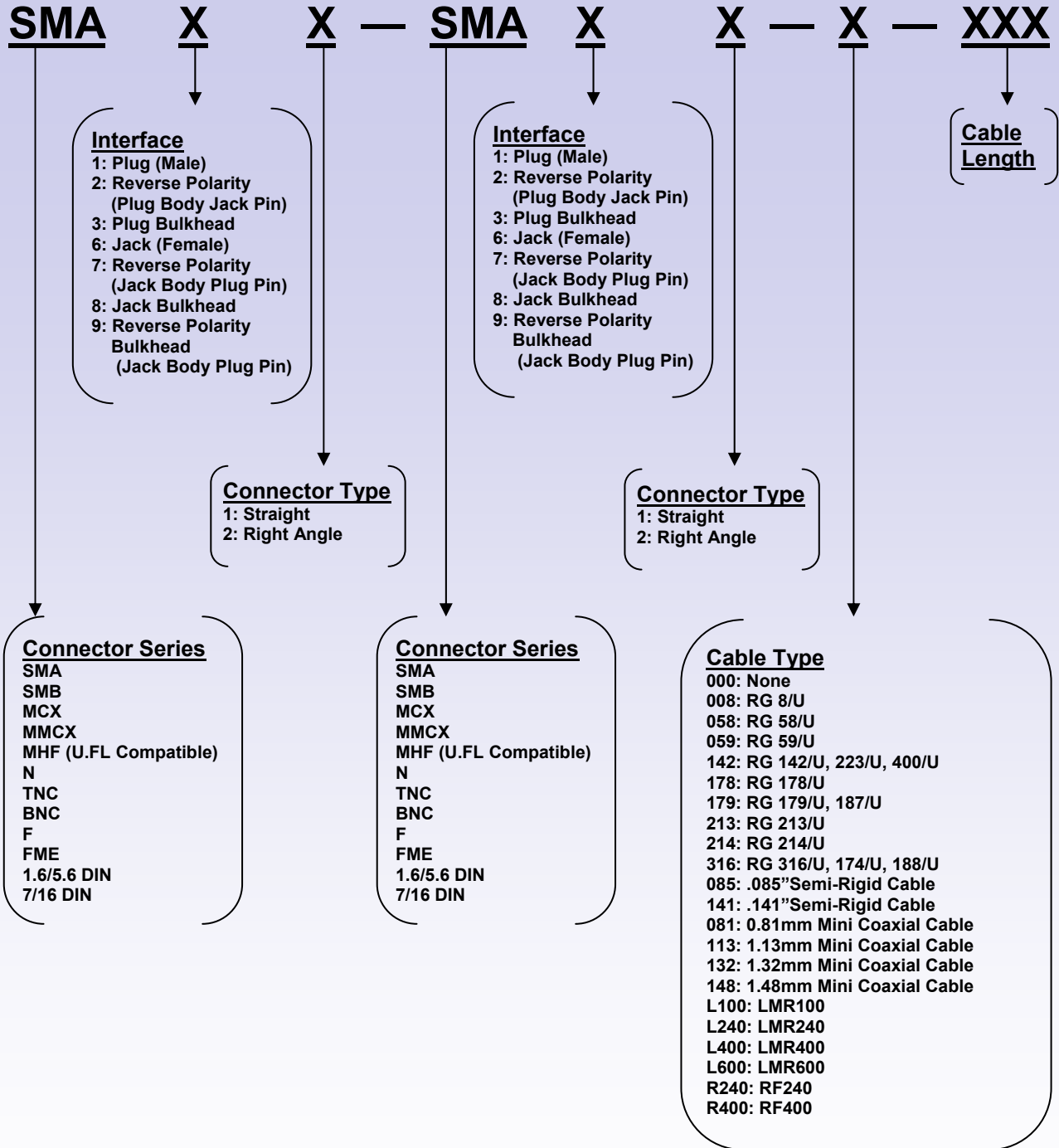


TAIWANCAST INC.

2F, No.27, Jhong-Rong St., Sin-Jhuang City, Taipei County 242, Taiwan

TEL. 886 2 8994 1601, FAX. 886 2 8994 1602, sales@rfconnector.com.tw, www.rfconnector.com.tw

RF Cable Assembly Number Legend



TAIWANCAST INC.

2F, No.27, Jhong-Rong St., Sin-Jhuang City, Taipei County 242, Taiwan

TEL. 886 2 8994 1601, FAX. 886 2 8994 1602, sales@rfconnector.com.tw, www.rfconnector.com.tw

MMCX SERIES

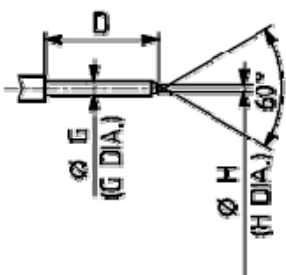
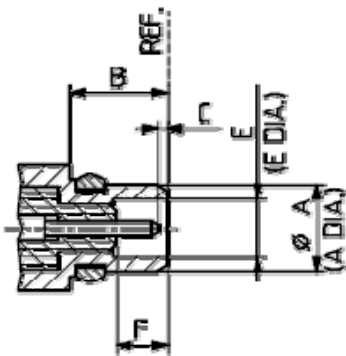
The MMCX Series connectors are smaller than the MCX. The reliable snap-on mating design offers low RF-leakage. So, these small dimensions allow you to use the connectors where space requirements are critical.

Applications:

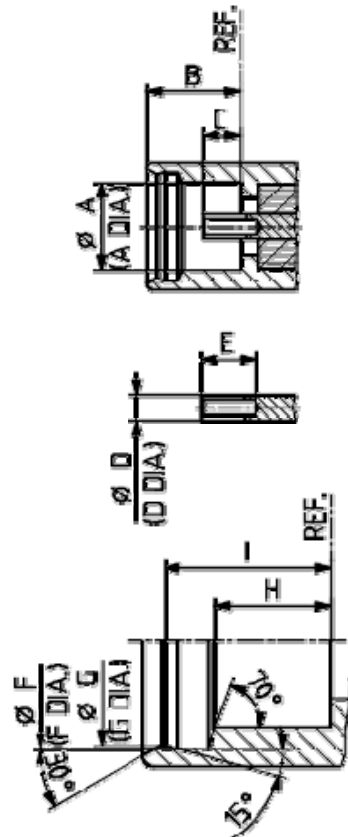
- ◆ Wireless Application
- ◆ Telecom
- ◆ GPS
- ◆ Radios
- ◆ Antennas
- ◆ Radio Boards
- ◆ Instrumentation
- ◆ Base Stations
- ◆ Components
- ◆ Satcom
- ◆ Broadband Communications
- ◆ PCMCIA Cards

Interface Mating Dimensions:

Plug (male)



Jack (female)



Interface Dimension in Millimeters					
	Male		Female		
	Min.	Max.		Min.	Max.
A		2.40	A	2.41	
B	2.70		B		2.65
C	0.00	0.25	C	0.90	1.20
D	1.23		D	0.70 nom	
E	1.58	1.62	E	1.40	
F	1.23		F	3.00	3.04
G	0.38	0.42	G	2.88	2.92
H		0.20	H	1.57	1.63
			I	2.34	2.26

TAIWANCAST INC.

2F, No.27, Jhong-Rong St., Sin-Jhuang City, Taipei County 242, Taiwan

TEL. 886 2 8994 1601, FAX. 886 2 8994 1602, sales@rfconnector.com.tw, www.rfconnector.com.tw

Technical Characteristics

Electrical

Impedance	50 ohm	
Frequency Range	0 – 6 GHz	
Working Voltage	170 VRMS max.	
Dielectric Withstanding Voltage	500 VRMS	
VSWR	Straight	1.3 max.
	Right Angle	1.5 max.
Contact Resistance	Center Contact	5 Milliohm Max.
	Outer Contact	2.5 Milliohm Max.
Insulator Resistance	1000 Mega ohms min.	

Material:

Part Name	Material	Finish
Body, Metal Parts	Brass	Gold or Nickel
Center Contacts	Plug: Brass	Gold
	Jack: Beryllium Copper	Gold
Insulator	PTFE	
Crimp Ferrule	Annealed Copper	Gold or Nickel

Mechanical & Environmental

Mating	"Push-Pull" Snap-On Coupling
Engagement Force	3.4 lbs. max
Disengagement Force	1.4–3.4 lbs max.
Contact Retention	2.3 lbs. min.
Durability (Mating)	500 cycles min. (For Be/Cu Jack Contact only)
Temperature Range	-65°C ~ 155°C
Vibration	MIL-STD-202 Meth. 204/C
Salt Spray	MIL-STD-202 Meth. 101/B
Thermal Shock	MIL-STD-202 Meth. 107/B

TAIWANCAST INC.

2F, No.27, Jhong-Rong St., Sin-Jhuang City, Taipei County 242, Taiwan

TEL. 886 2 8994 1601, FAX. 886 2 8994 1602, sales@rfconnector.com.tw, www.rfconnector.com.tw

MMCX SERIES

MMCX1150-1-XXX MMCX STR. PLUG CRIMP TYPE

Suitable Cable:

- (1)RG178, RG196
- (2)RG174, RG188, RG316
- (3)RD316



MMCX1150-3-XXX MMCX STR. PLUG SOLDER TYPE

Suitable Semi-Rigid Cable:

- (1) .047
- (2) .085



MMCX1150-4 MMCX STR. PLUG P.C.B. MOUNT



MMCX1150-4EDGE MMCX STR. PLUG P.C.B. EDGE MOUNT



MMCX1250-1-XXX MMCX R/A PLUG CRIMP TYPE

Suitable Cable:

- (1)RG178, RG196
- (2)RG174, RG188, RG316
- (3)RD316



MMCX1250-3-XXX MMCX R/A PLUG SOLDER TYPE

Suitable Semi-Rigid Cable:

- (1) .047
- (2) .085



TAIWANCAST INC.

2F, No.27, Jhong-Rong St., Sin-Jhuang City, Taipei County 242, Taiwan

TEL. 886 2 8994 1601, FAX. 886 2 8994 1602, sales@rfconnector.com.tw, www.rfconnector.com.tw

MMCX SERIES

MMCX6150-1-XXX MMCX STR. JACK CRIMP TYPE

Suitable Cable:

(1)RG178, RG196

(2)RG174, RG188, RG316

(3)RD316



MMCX6150-4 MMCX STR. JACK P.C.B. MOUNT



MMCX6150-4EDGE MMCX STR. JACK P.C.B EDGE MOUNT



MMCX6150-9 MMCX STR. JACK SURFACE MOUNT



MMCX6150-9 MMCX STR. JACK SURFACE MOUNT



MMCX6250-1-XXX MMCX R/A JACK CRIMP TYPE

Suitable Cable:

(1)RG178, RG196

(2)RG174, RG188, RG316

(3)RD316



TAIWANCAST INC.

2F, No.27, Jhong-Rong St., Sin-Jhuang City, Taipei County 242, Taiwan

TEL. 886 2 8994 1601, FAX. 886 2 8994 1602, sales@rfconnector.com.tw, www.rfconnector.com.tw

MMCX SERIES

MMCX6250-4
MMCX R/A JACK P.C.B. MOUNT



TAIWANCAST INC.

2F, No.27, Jhong-Rong St., Sin-Jhuang City, Taipei County 242, Taiwan
TEL. 886 2 8994 1601, FAX. 886 2 8994 1602, sales@rfconnector.com.tw, www.rfconnector.com.tw